

8-Inch C.S. 12-Bag Filter

Model/Make: 8" 12 Basket CS / Clear Blue Filtration 36-30-8F-CS-12

Product Description

Single vessel mounted on a fork liftable skid manufactured in accordance with ASME boiler and pressure vessel code including registered U-stamp. Different filter elements are available depending on job requirements and should be specified by the customer prior to use

WEIGHTS AND MEASURES

» Capacity*: 1000 – 1200 gpm (@ 1 micron and up)
» Design Pressure: 150 psig
» Design Temperature: 250°F max. (gasket dependent)
» Height: 5'-10" (overall)
» Width: 5'-11"
» Depth: 6'-9"
» Weight (dry): 2036 lbs. (approx.)

*Capacity (flowrate) depends on factors such as liquid viscosity, micron value of the filter media, solids loading etc. Assuming water as a filtrate and factoring in pressure drop only, 1200 gpm is a practical upper limit for a size #2 bag with a 100 micron rating; 1000 gpm with 1-micron rated bags.. Clean pressure drop would be 2-3 psi. Lowering the micron rating increases the pressure drop. The minimum pressure drop for this unit at higher micron ratings is 1-2 psi. Filter bags should be changed out at 15-18 psig, or earlier if the process requires it.

WETTED MATERIALS (for material compatibility check)

Carbon Steel Filter vessels; piping
SS316 Internal filter element supports
Viton O-rings

SKID DESIGN

» Skid: Painted carbon steel skid with access platforms and steps to ease maintenance
» Vessel Leg Supports: Fabricated Carbon Steel outside leg seal welded
» Forklift Pockets: 4-way Fork pockets

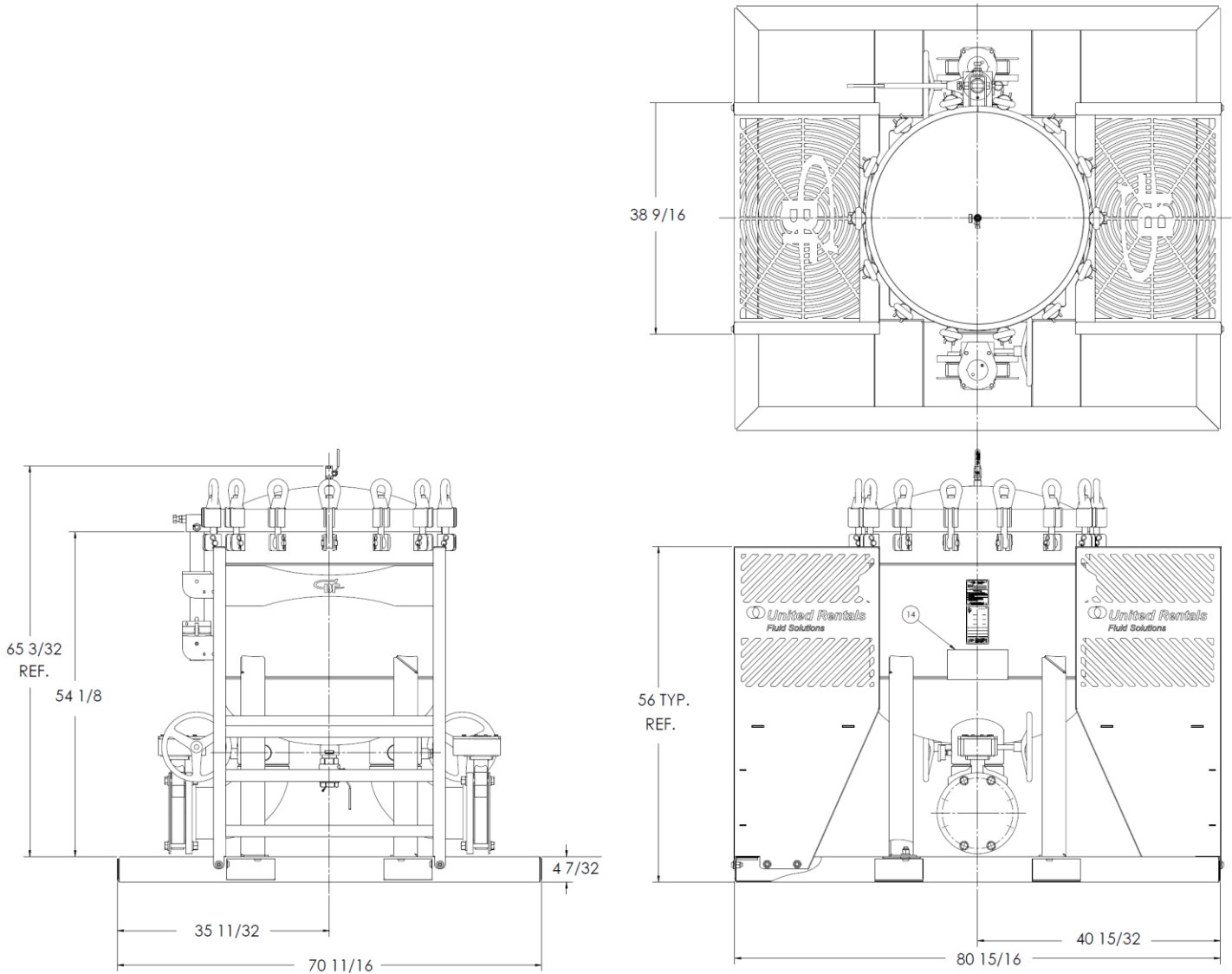
FILTER DESIGN

» Assembly Number: Clear Blue Filtration 36-30-8F-CS-12 EFE-0642
» Top Head: (14) closure bolts – CS
» Shell: 36" O.D. – Carbon Steel
» Inlet & Outlet: 8" 150# RFSO flanges, CS
» Bag Elements: 12 required: size #2, Available fibers range from 1 to 1500 microns.
» Lid and Basket Seal: Viton O-ring
» In/Out Valves: 8" Bray butterfly with FKM seat
» Internal Hardware: 316SS Electropolished bag support/strainer baskets



8-Inch C.S. 12-Bag Filter

Model/Make: 8" 12 Basket CS / Clear Blue Filtration 36-30-8F-CS-12



100 First Stamford Place, Ste 700
Stamford, CT 06902 | USA

UnitedRentals.com | 800.UR.RENTS
© 2019 United Rentals, Inc.

To the best of our knowledge the technical data contained herein are true and accurate at the date of issuance and are subject to change without prior notice. No guarantee of accuracy is given or implied because variations can and do exist. NO WARRANTY OR GUARANTEE OF ANY KIND IS MADE BY UNITED RENTALS, EITHER EXPRESSED OR IMPLIED.